

# Ligation made easy ...

... with the new Quick>>2.0<sup>®</sup> bracket system.



**New!**

## Quick>>2.0<sup>®</sup> bracket system

Quick bracket and molar bracket.  
New geometry, improved technology.



To order please call Bonarch Supply Canada Ltd.  
71 Beckwith Street, North, Smiths Falls, Ontario, Canada

1-800-267-9225

[bonarch@orthodontic.ca](mailto:bonarch@orthodontic.ca)

[www.orthodontic.ca](http://www.orthodontic.ca)

Patents no.: DE 44 34 209 A1 · EP 782414 B1 · US 7,255,557 B2 · US 5,820,371

**FORESTADENT<sup>®</sup>**  
100 YEARS OF PRECISION

# The Quick»2.0® bracket system – when ease and speed are a must

The new generation Quick»2.0 bracket comes with improved efficiency making treatment both user-friendly and more profitable. Combined with the newly developed molar brackets, the result is a perfectly co-ordinated system which will free up more of your time.

## The Quick»2.0 bracket system

Improvements include a new geometrically optimised clip which can easily be opened despite increased strength and a low profile lower anterior tooth bracket.

### New clip

The new clip has been reinforced to reduce potential deformation caused by frequent opening and closing. The new design also includes a slightly raised tension of the clip. **1**

The new clip design guarantees a secure and accurate low friction-fit of the archwire within the slot. Currently Doctors tend to use undersized archwires with very low forces for the initial aligning. Even in the case of highly rotated teeth these small heat activated archwires (i.e. BioStarter 0.010", 0.012" or 0.014") remain safely within the bracket slot without getting caught between the clip and bracket interface. **2**

### The new lower anterior tooth brackets

The Quick»2.0 brackets feature a low profile design of the lower anterior tooth brackets with rounded edges and a flattened profile. Patient comfort improves significantly and irritations of the labial soft tissue are eliminated. **3**

### The new Quick»2.0 molar bracket provides very efficient treatment options.

The new molar bracket in the Quick»2.0 system offers tremendous advantages when changing archwires. The inconvenience of threading archwires into conventional first and second molar tubes is a thing of the past. The time-consuming procedure of cutting and bending the distal end of the archwire in the patient's mouth is no longer necessary and can be done extra-oral.

### Design

The brand new Quick»2.0 molar bracket corresponds to the anterior Quick brackets and offers easy ligation. Just open the clip, insert the archwire into the bracket slot and close the clip again by lightly pressing the clip shut. **4**

### Easier

When working with conventional molar tubes, NiTi archwires in particular often make distal intraoral cutting and bending difficult. With the Quick»2.0 molar bracket, however, the archwire is fitted to a plaster model extraorally (cutting off distal ends, annealing and bending). Afterwards, the prepared archwire only has to be ligated intraorally. This provides you with significant advantages and will be time-saving compared to standard systems with closed buccal tubes. **5**

### More secure

The Quick»2.0 bracket archwires can be cut off extraorally, negating any risk of dropping cut-off wire into the patient's pharynx - distal end cutters do not reliably hold the cut-off with the extremely thin wires (0.010" – 0.013").

### Versatile

The new Quick»2.0 molar bracket comes in three versions: The one piece molar bracket with the conventional hook-style retention base, the easily adjustable Big Foot pads for direct bonding or the welded onto bands option. **6**

### More comfortable and profitable

Both you and your patient will benefit from the new Quick»2.0 molar bracket. Changing archwires is easier, saving you time and reducing chair time.

### Advantages of the Quick»2.0 bracket system

	extraoral procedure	intraoral procedure	intraoral procedures total	chairside time
<b>with molar bracket 2.0</b>	annealing (NiTi archwires), cutting distal ends and bending (i.e. on plaster model)	ligating into the Quick»2.0 molar bracket	1	reduced by 40%
<b>without molar bracket</b>	annealing (NiTi archwires)	threading into the molar tube, cutting distal ends and bending	3	known

1

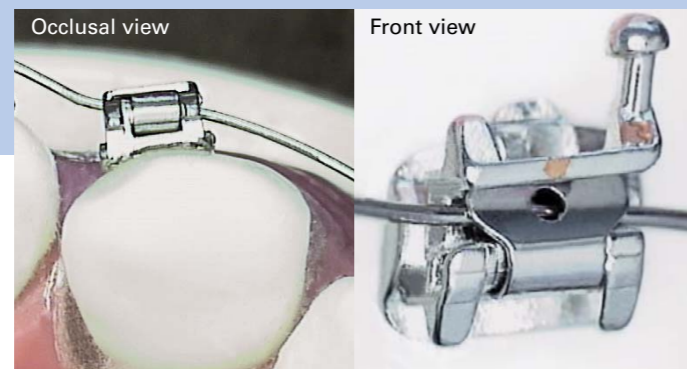
### Enhanced clip



Opening the new Quick»2.0 bracket is now even easier and more reliable.

2

### Optimised geometry for rotated teeth



Thin archwires will not get caught between the clip and the bracket.

3

### Low profile design of the lower anterior tooth brackets



Slightly flattened with rounded edges. Patient comfort is considerably increased.

4

### The Quick»2.0 molar bracket



Thanks to the clip design, the new Quick»2.0 molar bracket is easier to handle compared to closed round tubes.

5

### Faster and easier



Time-consuming procedures causing the patient discomfort can be carried out extraorally, e.g. cutting distal ends and bending.

6

### Versatility



Three options are available: The one piece molar bracket with the conventional hook-style retention base, the easily adjustable Big Foot pads for direct bonding or the welded onto bands option.

## Quick>>2.0<sup>o</sup> Starter Kits



Roth-System\* 5 cases

Slot .018"	Order-Nr.	Slot .022"	Order-Nr.
without hook	707-1018	without hook	707-1022
with hook 3	707-1019	with hook 3	707-1023
with hook 3-5	707-1020	with hook 3-5	707-1024

McLaughlin/Bennett/Trevisi-System\* 5 cases

Slot .018"	Order-Nr.	Slot .022"	Order-Nr.
without hook	707-1025	without hook	707-1028
with hook 3	707-1026	with hook 3	707-1029
with hook 3-5	707-1027	with hook 3-5	707-1030

## Quick>>2.0<sup>o</sup> Refill Kits



Roth System\* - Slot .018"

Cases	10	20
without hook	707-5018	707-5518
with hook 3	707-5019	707-5519
with hook 3-5	707-5020	707-5520

Roth System\* - Slot .022"

Cases	10	20
without hook	707-5022	707-5522
with hook 3	707-5023	707-5523
with hook 3-5	707-5024	707-5524

McLaughlin/Bennett/Trevisi-System\* - Slot .018"

Cases	10	20
without hook	707-5025	707-5525
with hook 3	707-5026	707-5526
with hook 3-5	707-5027	707-5527

McLaughlin/Bennett/Trevisi-System\* - Slot .022"

Cases	10	20
without hook	707-5028	707-5528
with hook 3	707-5029	707-5529
with hook 3-5	707-5030	707-5530

## Quick>>2.0<sup>o</sup> Cases

Roth System\*

Slot .018" / 5 - 5

Cases	1	5	10	20	50
<b>Brackets</b>	<b>20</b>	<b>100</b>	<b>200</b>	<b>400</b>	<b>1000</b>
without hook	706-0971	706-0972	706-0973	706-0974	706-0975
with hook 3	706-0976	706-0977	706-0978	706-0979	706-0980
with hook 3-5	706-0981	706-0982	706-0983	706-0984	706-0985

Slot .022" / 5 - 5

Cases	1	5	10	20	50
<b>Brackets</b>	<b>20</b>	<b>100</b>	<b>200</b>	<b>400</b>	<b>1000</b>
without hook	706-0986	706-0987	706-0988	706-0989	706-0990
with hook 3	706-0991	706-0992	706-0993	706-0994	706-0995
with hook 3-5	706-0996	706-0997	706-0998	706-0999	706-1000

McLaughlin/Bennett/Trevisi-System\*

Slot .018" / 5 - 5

Cases	1	5	10	20	50
<b>Brackets</b>	<b>20</b>	<b>100</b>	<b>200</b>	<b>400</b>	<b>1000</b>
without hook	706-0837	706-0838	706-0839	706-0840	706-0841
with hook 3	706-0842	706-0843	706-0844	706-0845	706-0846
with hook 3-5	706-0847	706-0848	706-0849	706-0850	706-0851

Slot .022" / 5 - 5

Cases	1	5	10	20	50
<b>Brackets</b>	<b>20</b>	<b>100</b>	<b>200</b>	<b>400</b>	<b>1000</b>
without hook	706-0852	706-0853	706-0854	706-0855	706-0856
with hook 3	706-0857	706-0858	706-0859	706-0860	706-0861
with hook 3-5	706-0862	706-0863	706-0864	706-0865	706-0866

Slot .018" / 6 - 6

Cases	1	5	10	20	50
<b>Brackets</b>	<b>24</b>	<b>120</b>	<b>240</b>	<b>480</b>	<b>1200</b>
without hook	706X0971	706X0972	706X0973	706X0974	706X0975
with hook 3	706X0976	706X0977	706X0978	706X0979	706X0980
with hook 3-5	706X0981	706X0982	706X0983	706X0984	706X0985

Slot .022" / 6 - 6

Cases	1	5	10	20	50
<b>Brackets</b>	<b>24</b>	<b>120</b>	<b>240</b>	<b>480</b>	<b>1200</b>
without hook	706X0986	706X0987	706X0988	706X0989	706X0990
with hook 3	706X0991	706X0992	706X0993	706X0994	706X0995
with hook 3-5	706X0996	706X0997	706X0998	706X0999	706X1000

Slot .018" / 6 - 6

Cases	1	5	10	20	50
<b>Brackets</b>	<b>24</b>	<b>120</b>	<b>240</b>	<b>480</b>	<b>1200</b>
without hook	706X0837	706X0838	706X0839	706X0840	706X0841
with hook 3	706X0842	706X0843	706X0844	706X0845	706X0846
with hook 3-5	706X0847	706X0848	706X0849	706X0850	706X0851

Slot .022" / 6 - 6

Cases	1	5	10	20	50
<b>Brackets</b>	<b>24</b>	<b>120</b>	<b>240</b>	<b>480</b>	<b>1200</b>
without hook	706X0852	706X0853	706X0854	706X0855	706X0856
with hook 3	706X0857	706X0858	706X0859	706X0860	706X0861
with hook 3-5	706X0862	706X0863	706X0864	706X0865	706X0866

Also available as cases 7 - 7: Please use the same order-numbers as for 6 - 6 and replace "X" by "V".

McLaughlin/Bennett/Trevisi-System: The reduced low profile lower anterior brackets are available from early 2008.

## Quick>>2.0<sup>o</sup> Universal Molar-Brackets

with hook style bracket base and hook.



MAX. / 6 - 7 (10 pcs/pack)

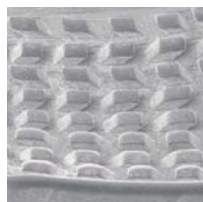
Slot	right	left
.018"	731-0713	730-0713
.022"	731-0711	730-0711

Torque -14°  
Rotation 12°

MAND. / 6 - 7 (10 pcs/pack)

Slot	right	left
.018"	731-1713	730-1713
.022"	731-1711	730-1711

Torque -20°  
Rotation 10°



Even available on pad and for welding on bands!



Quick-Director Order-Nr. 501-1841

CE



Crimpable Stops

Order-Nr. 760-0071

CE 0297