

BioMers Translucent Arch Wire

Orthodontic products today - YOU choose the one that you would like to wear...



Standard metal brackets with standard metal arch wires.



Ceramic brackets with a standard metal arch wire. This is the best esthetic look in the market today.



Translucent brackets with the innovative BioMers translucent arch wire.

Esthetic Wire Comparison:

Top: Translucent brackets with the best available coated metal wires available today. The opaque and off-colored coating makes coated wires visibly apparent to the eye.

Bottom: Translucent brackets with the Biomers arch wire.

Top:
Coated metal arch wire



Bottom:
Biomers arch wire



Top:
Tooth tone coated metal arch wire

Bottom:
BioMers arch wire

Orthodontic patients are often subjected to embarrassment brought about by the unsightly nature of metal braces. To alleviate consumers' esthetic concerns during orthodontic treatment, the industry introduced esthetic alternatives to metal brackets almost twenty years ago. As of today, other esthetic alternatives are not applicable to all orthodontic patients. In many cases they lack the necessary mechanical properties to straighten teeth effectively. Furthermore, many of these products require orthodontist to go through special training.

BioMers has solved these problems by developing the first complete and effective esthetic alternative to unsightly metal wires. BioMers wires are translucent and, therefore, nearly invisible. As they function in the same way as metal wires, orthodontists do not have to undergo special training to use them. These wires have the necessary mechanical properties to straighten teeth effectively by means of patent pending polymer composite fabrication technology.

www.orthodontic.ca Web Links: [Promotion Video](#) [Technical/Training Video](#)

Your Authorized BioMers Distributor:

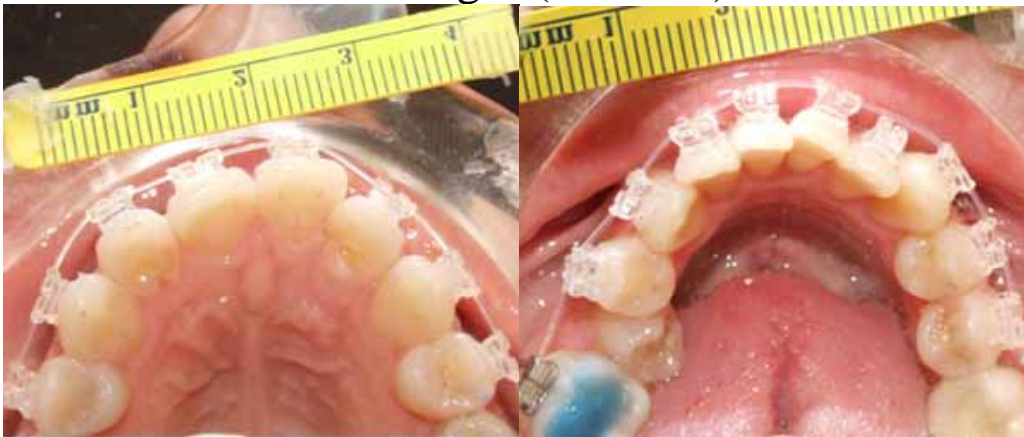
Bonarch Supply Canada Ltd. 1-800-267-9225
71 Beckwith Street, North Smiths Falls, Ontario, Canada K7A 2B6
bonarch@orthodontic.ca

Below are photos of several clinical trial patients with esthetic brackets and the BioMers Translucent Arch Wire



The following Photos demonstrate how effectively the BioMers Translucent Arch Wire moves teeth.

T0 Images (0 Month)



T1 Images (1 month)



Maxilla

Mandible

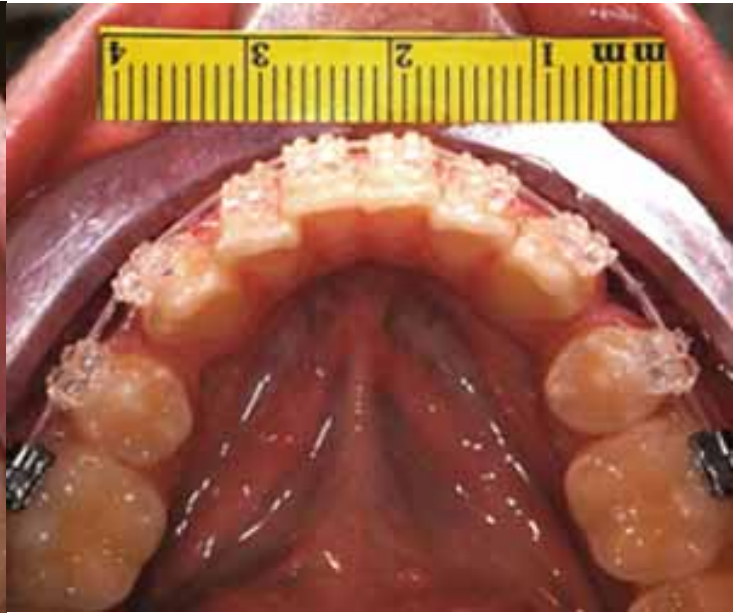
Treated Arch: Maxilla & Mandible

Incisor Irregularity Indices at T0 (maxilla and mandible, respectively): **5.4 and 6.9**

Incisor Irregularity Indices at T1 (maxilla and mandible, respectively): **2.7 and 4.2**

Significant tooth movement occurred at the upper and lower incisors.

T0 Images (0 Month)



T1 Images (1 month)

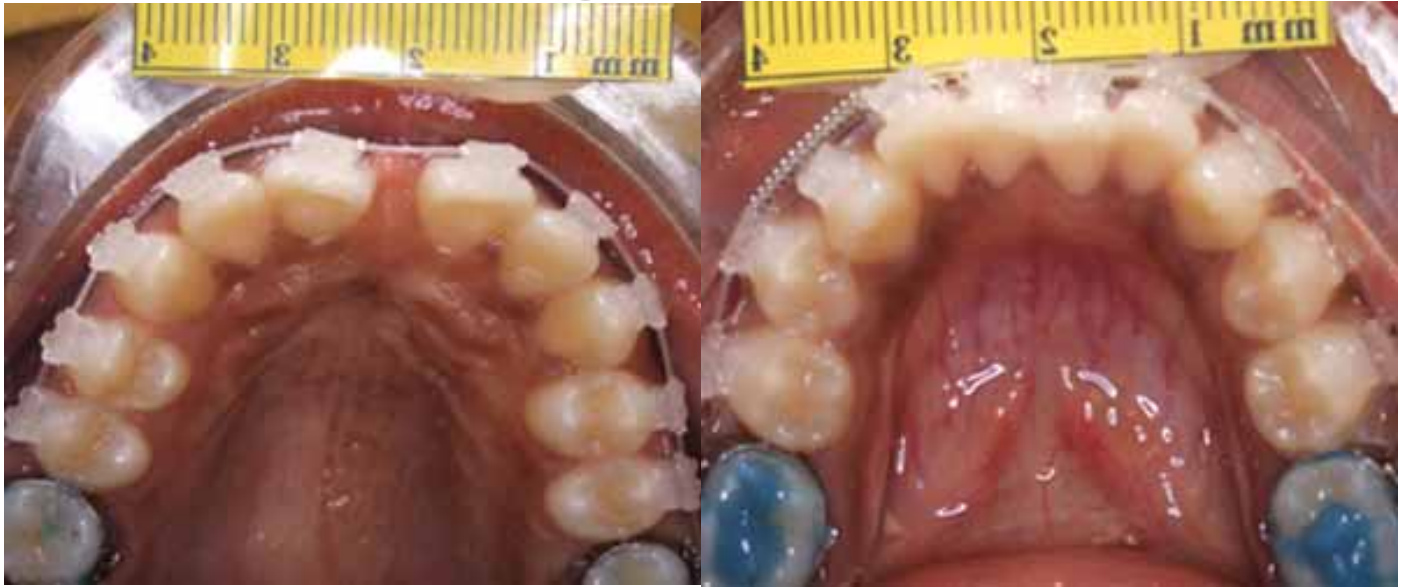


Maxilla



Mandible

T0 Images (0 Month)



T1 Images (1 month)



Maxilla

Mandible

Treated Arch: Maxilla & Mandible

Incisor Irregularity Indices at T0 (maxilla and mandible, respectively): **4.5 and 7.1**

Incisor Irregularity Indices at T1 (maxilla and mandible, respectively): **2.6 and 3.9**

Significant tooth movement occurred at the upper and lower incisors.